



WHITEPRINT PROCESSING



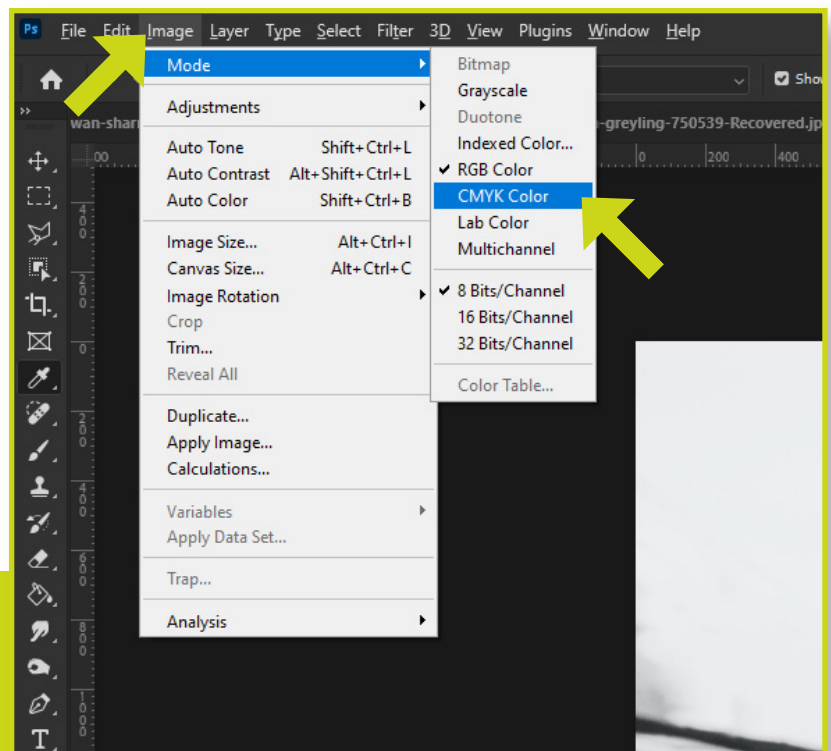
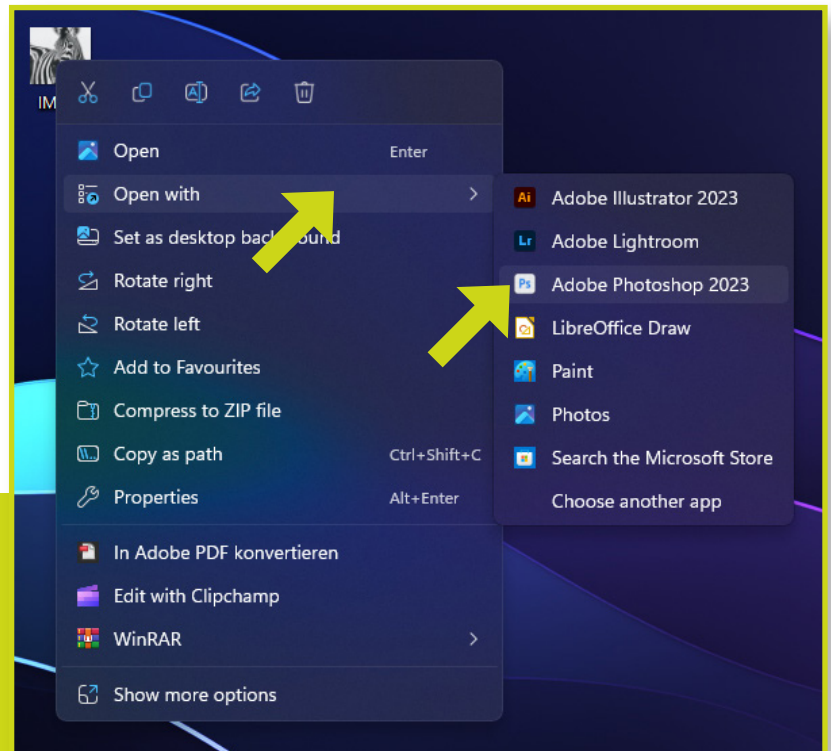
GETTING STARTED



In wallPen OS 2.0 we introduce a completely new printing method. You can now add a **fifth channel** specifically designed for the use of **white ink**.

BASIC SETUP

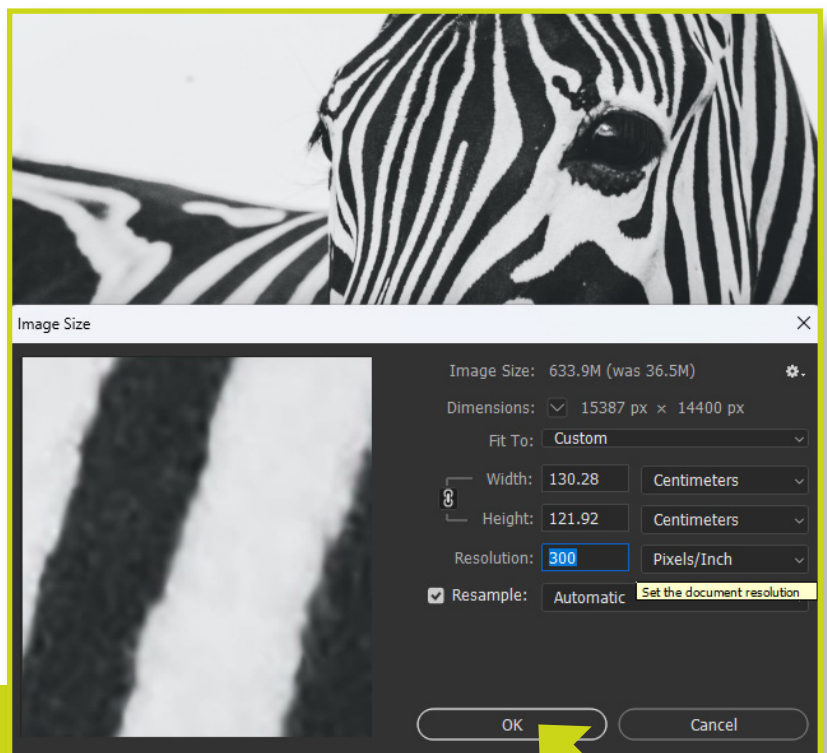
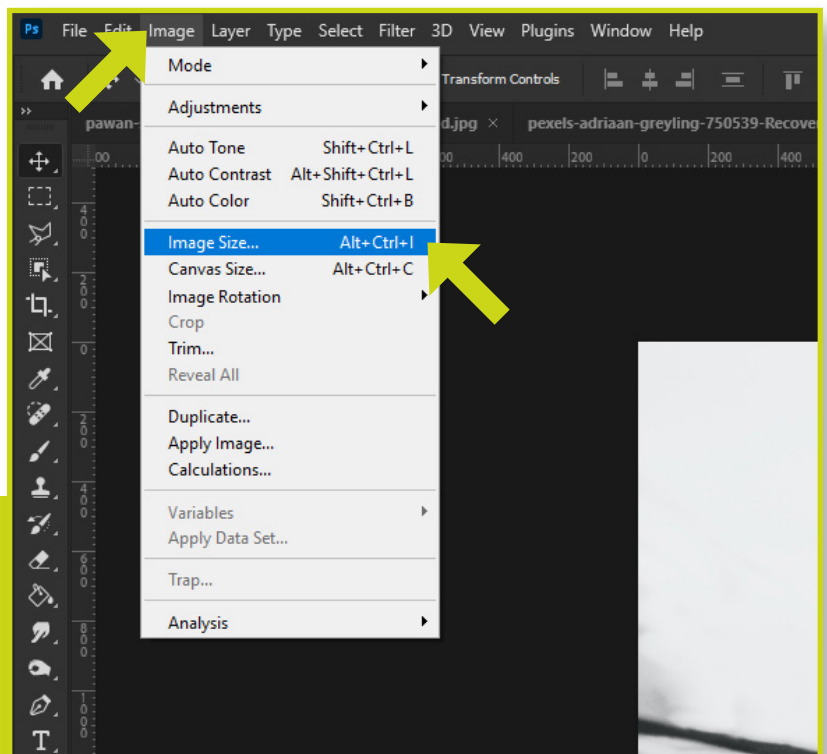
To get started, open the image in Adobe Photoshop as usual and make the following adjustments if necessary:



First, to convert the image from RGB colors to CMYK, go to:
Image > Mode > CMYK Color

BASIC SETUP

For optimal printing results, we recommend scaling the image to **300 DPI** under **Image > Image Size**.



Press **„OK“** and you're good to go!

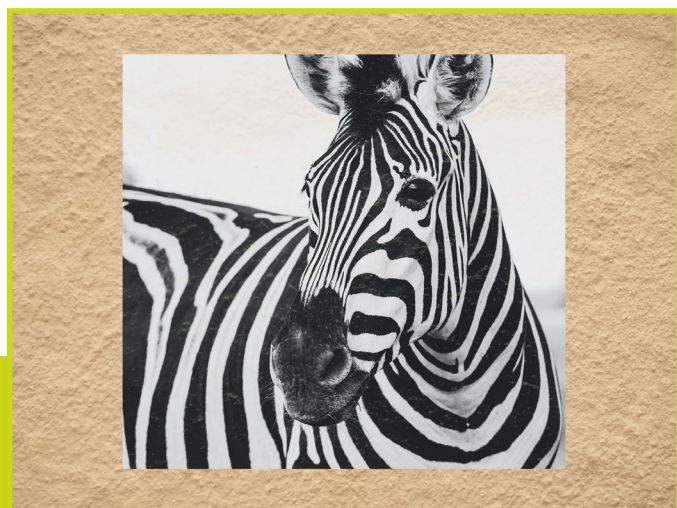
PREPARING THE MOTIF



There are several ways to prepare your print.
This depends on the motif, its shape and the color of the surface.

1. BASIC RECTANGULAR PRINT

The simple way



2. CROPPED PRINT

The best way to print custom shapes



3. PRINT ON BLACK SURFACES

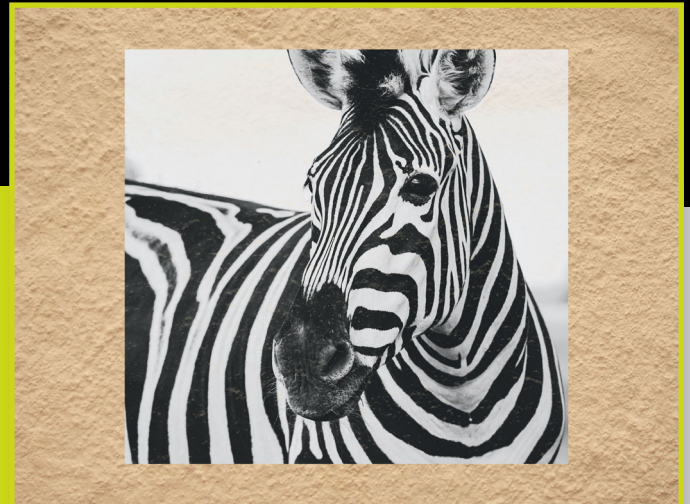
Suited for black surfaces



1. BASIC RECTANGULAR PRINT



The easiest method to apply a white print on any surface, no matter what color it is.



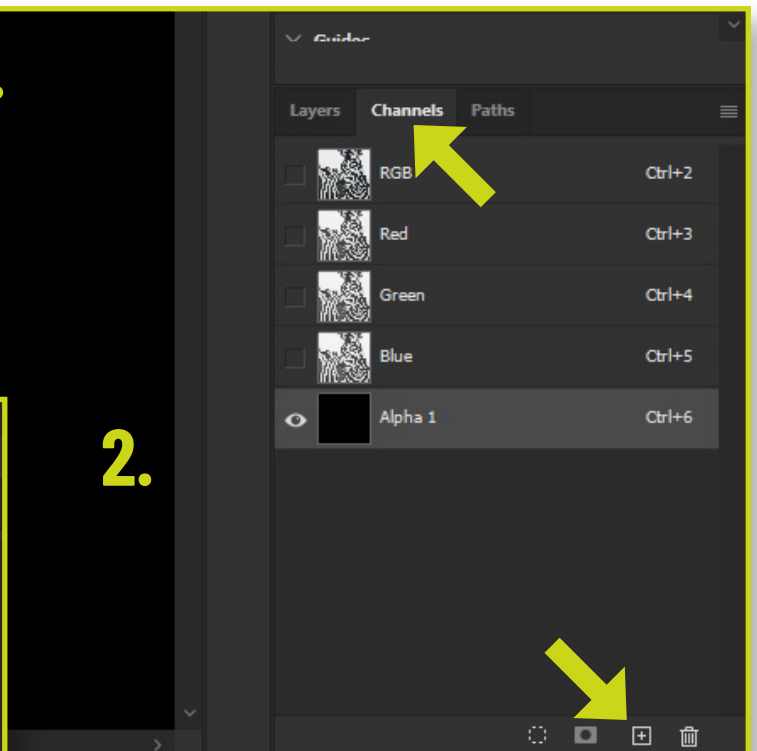
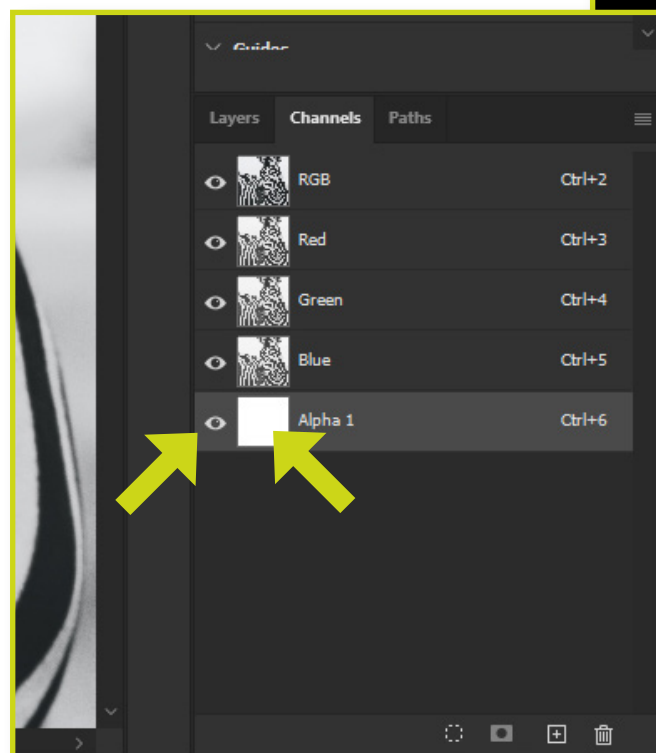
After you set your image to **300 DPI** and the colors to **CMYK** (Page 2 & 3) all you need to do is create a **fifth channel** for the **white ink**.

Everything that is drawn white on this channel will also be printed white. Everything that is drawn in black will not be printed. Gradations are also possible. Areas drawn in gray on the alpha channel will be used for white printing with less ink application.

1. click on „Channels“

Click the „+“ Symbol, which creates the „Alpha 1“ channel in black color.

1.



2.

2. Select the „Alpha 1“ channel. Press **CMD + I** to invert the channel to fill it completely with white color. You're done! It's important that the alpha channel is set to **visible** - just click the area left to the preview picture of the channel till the **eye icon** appears!

2. CROPPED PRINT

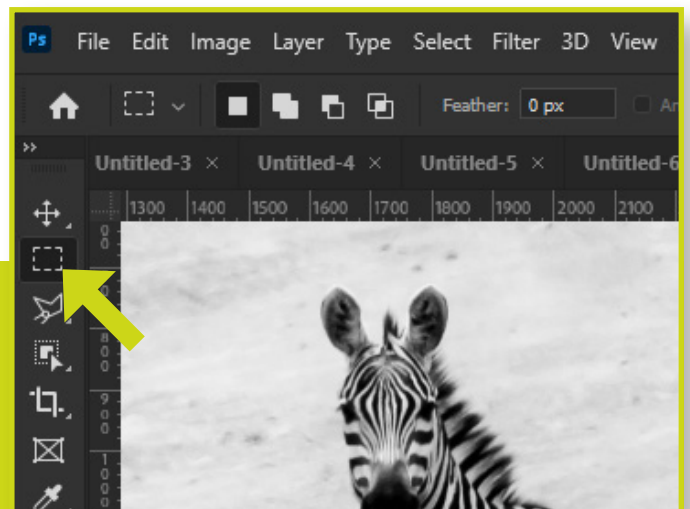


Suitable for printing custom shapes and objects.

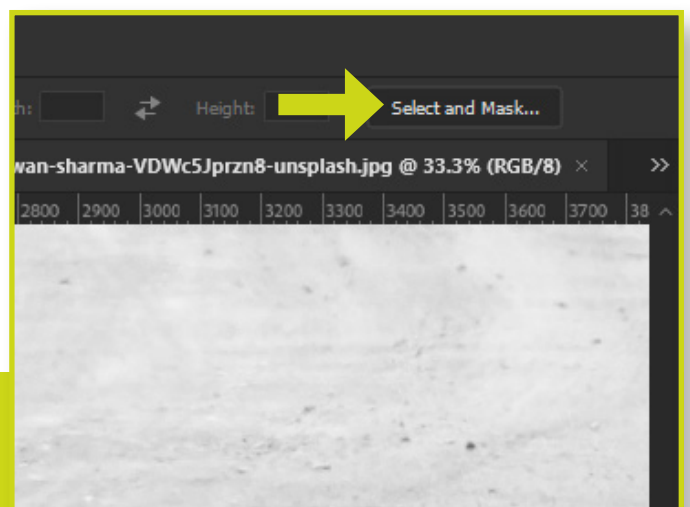
Cropped motifs must be cropped both on the **CMYK color layer** and in the **alpha channel**.



1. Open up your image as usual. On your keyboard, press „M” or select the „**Rectangular Marquee Tool**” with your mouse.

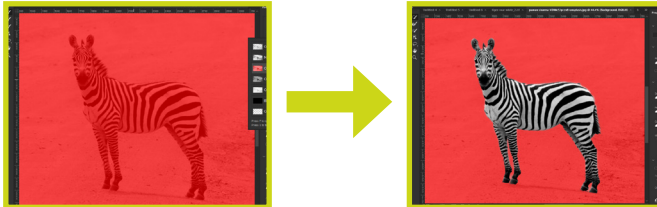
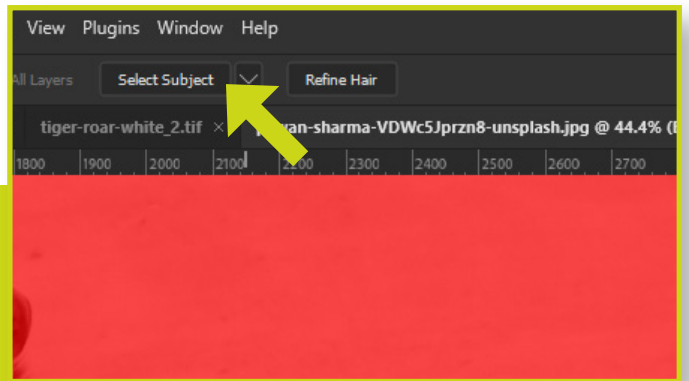


2. Click on „**Select and Mask...**” in the upper bar above the image.

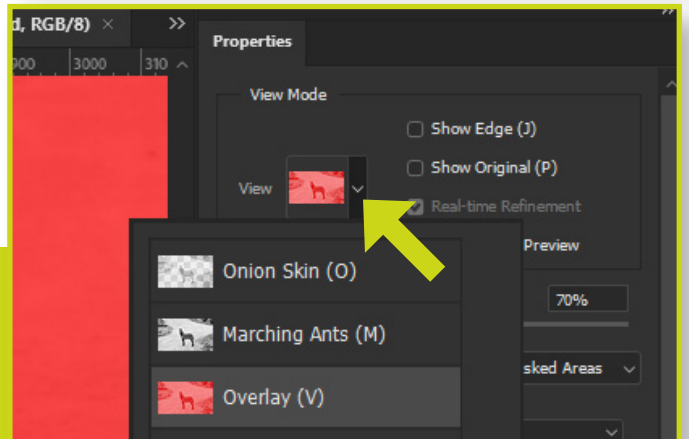


2. CROPPED PRINT

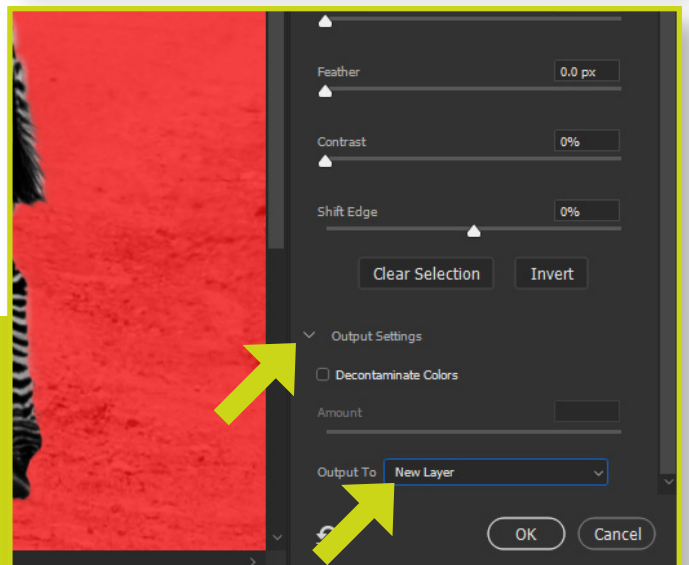
3. In the following window, click on **„Select Subject“** to let Photoshop automatically select your motif.



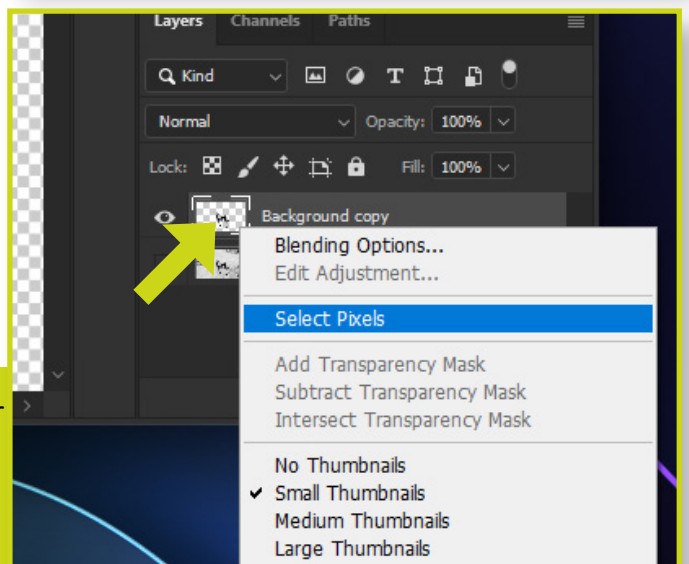
4. On the right side, select **„Overlay“** by clicking on the **„View“** Dropdown menu. This will help you see your selected motif.



5. The last step is to click on **„Output to“** under **„Output Settings“** in the lower right corner and select **„New Layer“**, then click on **„OK“**.

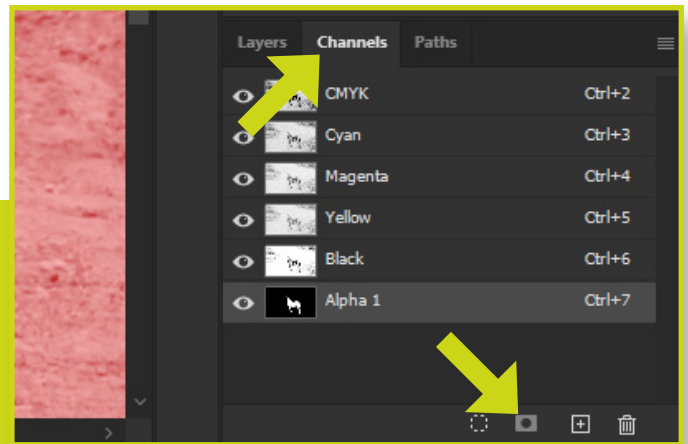


6. Now you have created a new layer with your cropped subject. **Right click** on the preview of the layer and select **„Select Pixels“**.

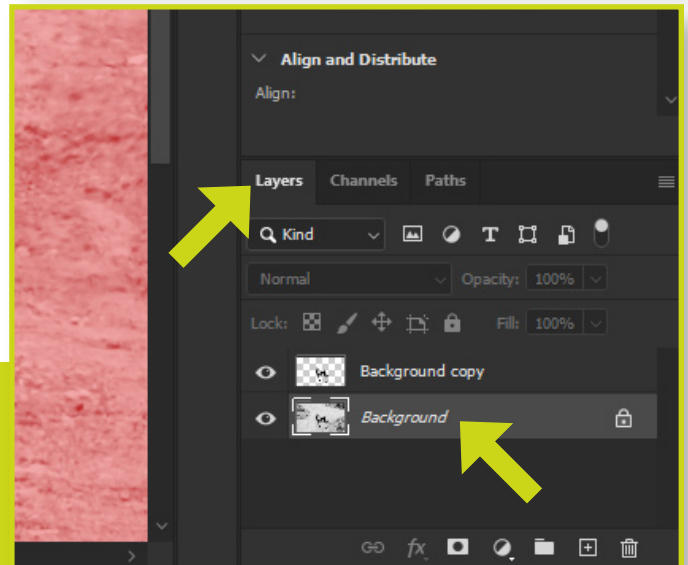


2. CROPPED PRINT

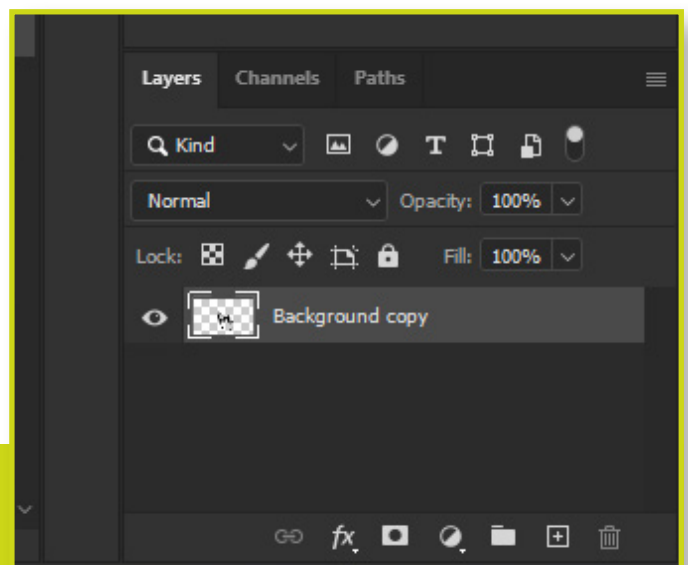
7. Click on „Channels“, then click on the „Save selection as channel“ button. Congratulations, now you’ve got your white channel set up!



8. Under „Layers“, click on the bottom layer and press **Backspace** to **delete** the layer, as you don’t want to print it.



9. You’re left with your final layer with your cropped motif. You’re done!



PRINT ON BLACK SURFACE



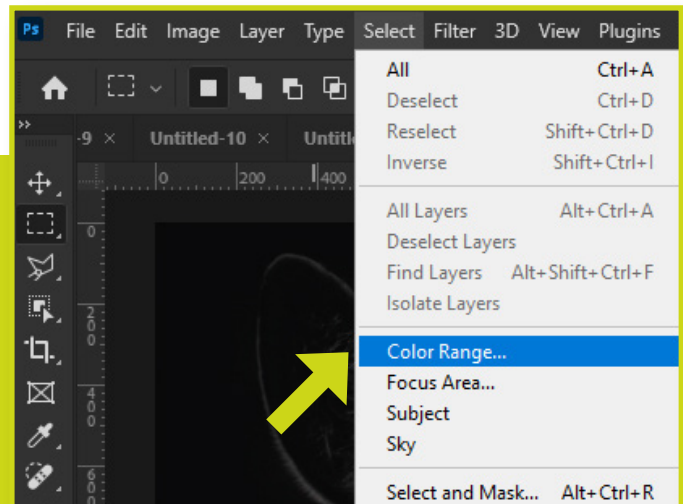
Suitable for prints on black surfaces, as you minimize the use of black ink so you can use the black color of your surface instead.

This method is particularly suitable for motifs that integrate seamlessly into the wall via gradation. Similar to CMYK color print, where the white surface color represents the white tone of your image, the black surface color replaces the black ink print in the motif.

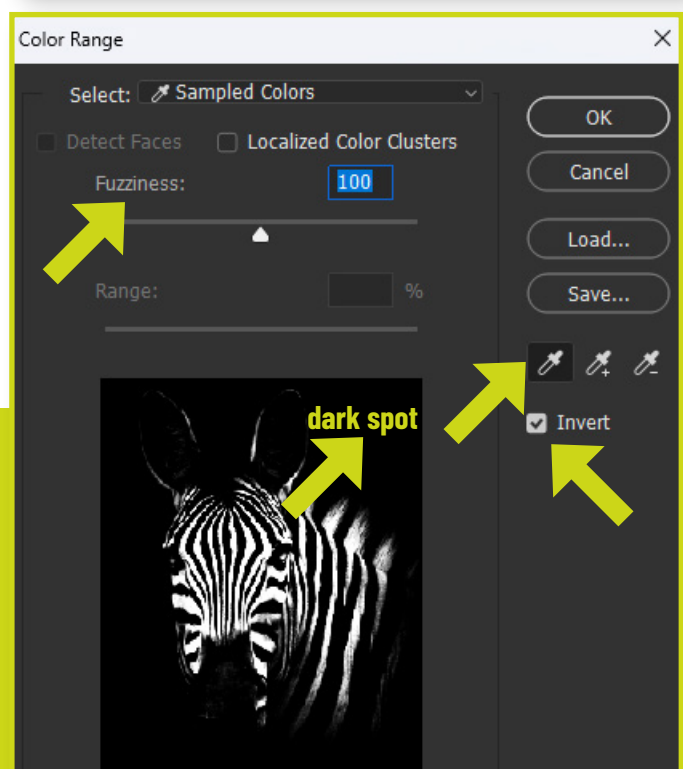


1. Open up your image as usual. Go to the **„Select“** menu and choose **„Color Range“**.

We will create a selection that will exclusively select all black color in the image just to get rid of it.

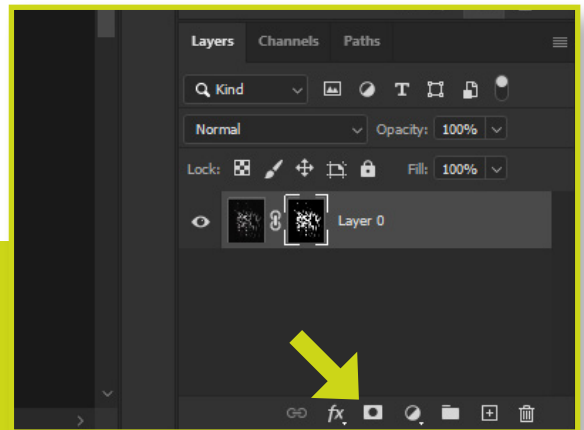


2. In the following window first select **„Invert“**, then select the **„eyedropper tool“** and click on the darkest spot on your image. The **„Fuzziness“** Slider helps you to finetune the amount of your selected color. Hit **„OK“** when you're ready.

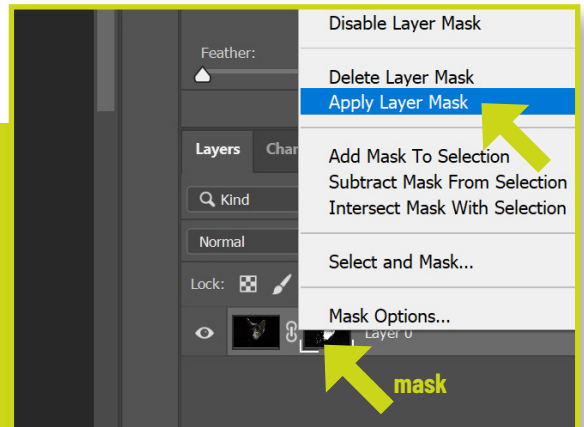


PRINT ON BLACK SURFACE

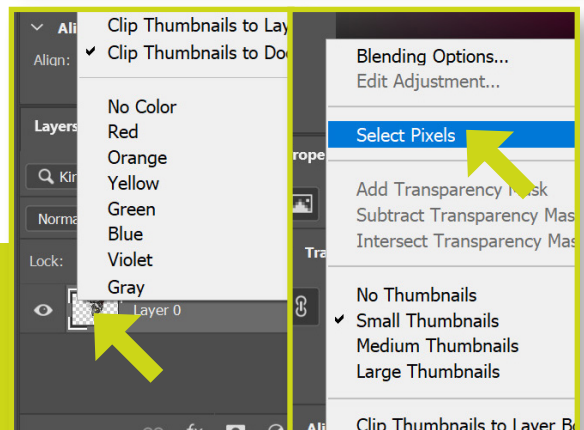
3. Click on the „**layer mask**” button to create a mask which is based on the selection you created previously.



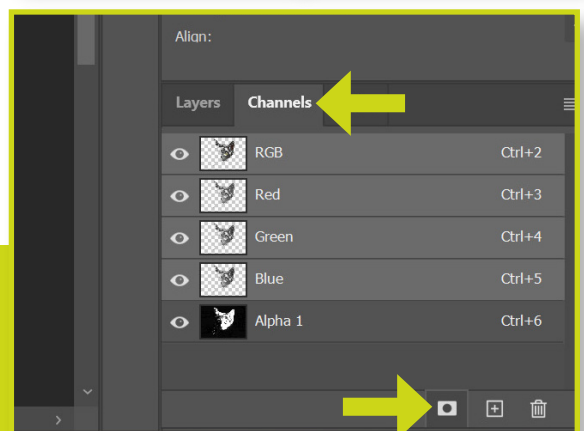
4. **Right click** on the layer mask and select „**Apply Layer Mask**” to merge the image and the layer mask into one layer. This step basically crops your motif and erases the black color of your motif.



5. Again, **right click** on the new merged layer and select „**Select Pixels**” to create a selection of the subject on your layer.



6. On the „**Channels**” Tab, click on „**Save Selection as Channel**” Button to create your white ink alpha channel. You're done!



Please note that these are just a few examples of preparing images for white printing. Some processes work better for some than others. It's best to find your own workflow. It is helpful to have some knowledge of Photoshop beforehand.

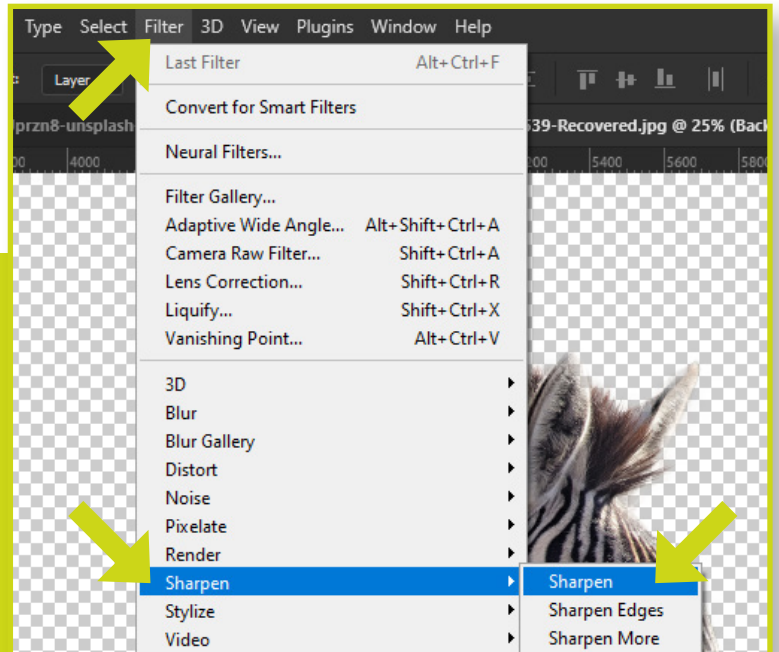
Preparation is key if you want a captivating end result.

SHARPEN IMAGES

Pre-sharpen the image once or even twice before printing, even if it looks oversharpened on the screen, the printed result will look clear.

You will find it in the menu under

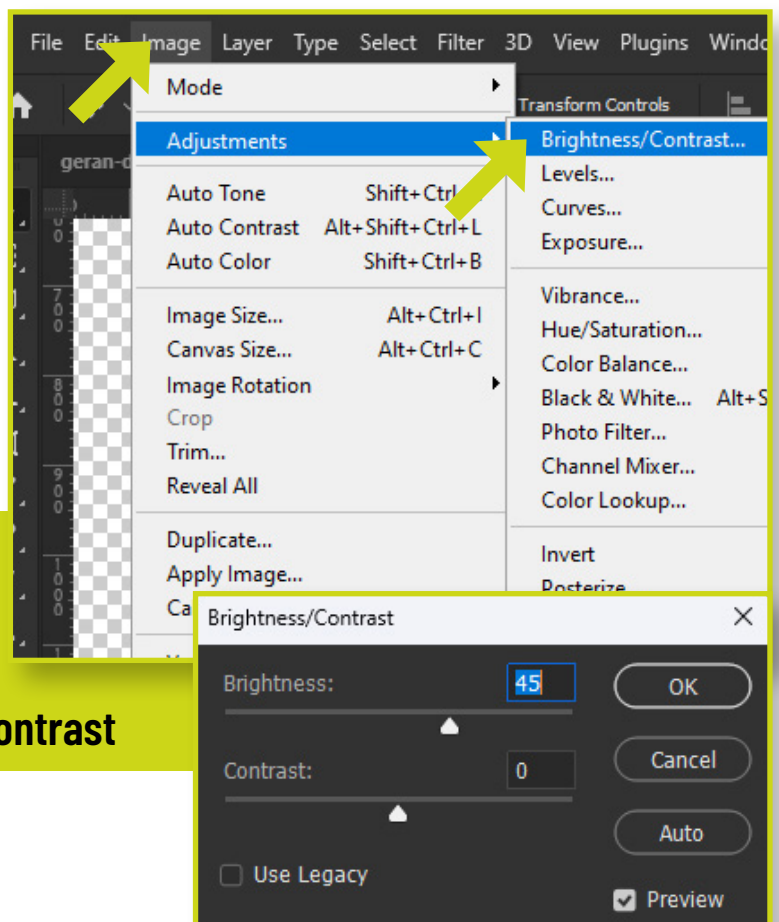
Filter > Sharpen > Sharpen



BRIGHTEN IMAGES

It is often advisable to lighten your subjects a good bit before printing. You can do this in the following menu:

Image > Adjustments > Brightness/Contrast



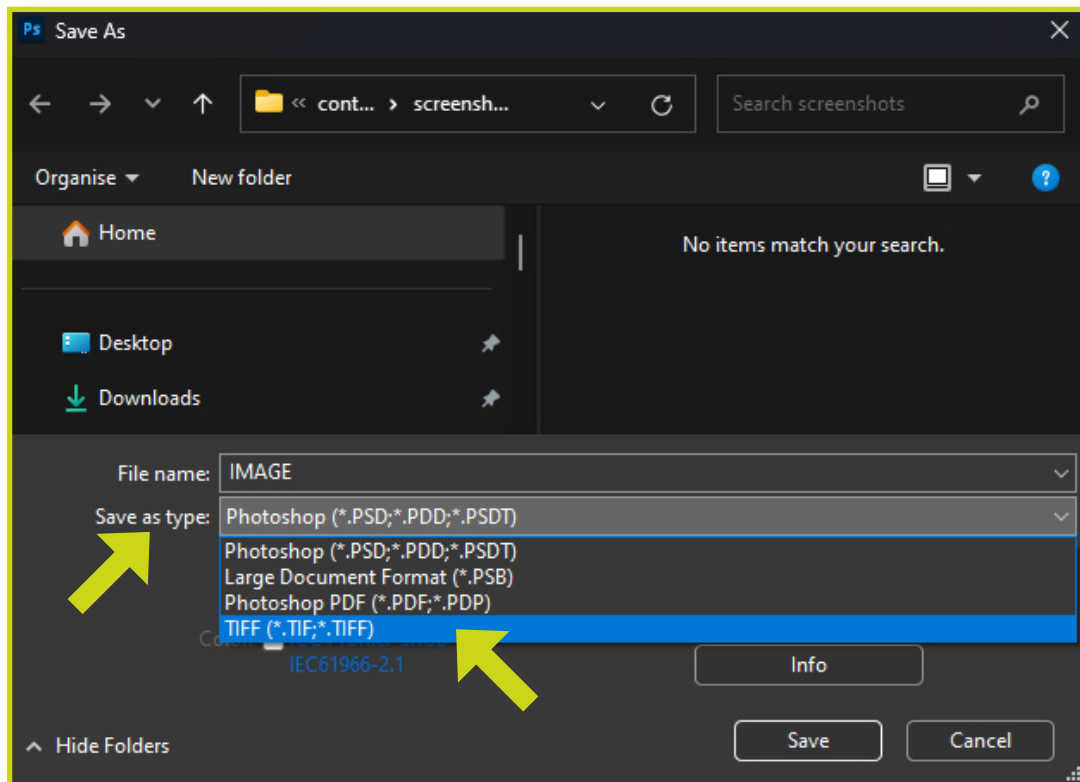
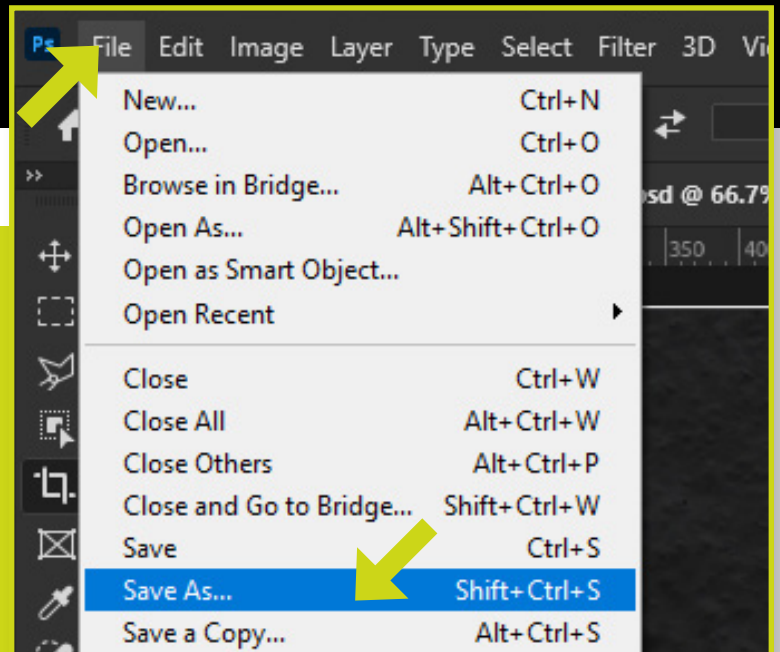
EXPORTING THE IMAGE



The image now needs to be saved as a **TIFF** on your hard drive.

To do this, click on **File > Save As...** and select the appropriate options.

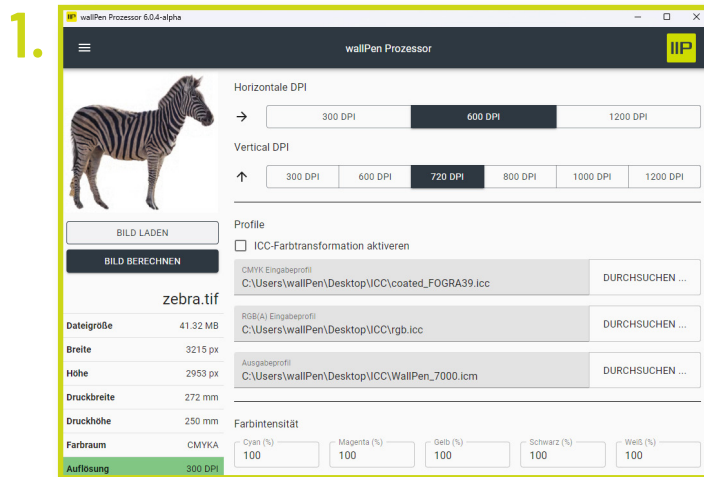
Then click **Save** to save as a **TIFF**.



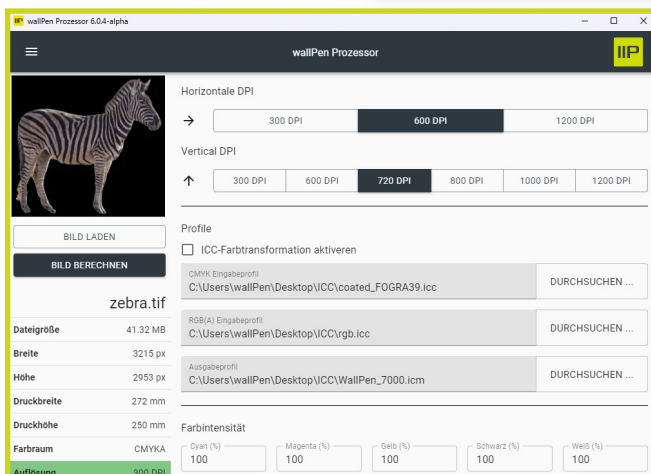
Now you can import the image into Processor 6.0 and process it for printing on your wallPen E2.

This process should already be familiar to you, with the exception that calibration is now fully done in wallPen OS. When you click on the edited preview image, you have the option to change the view, as demonstrated here. The different views offer the following:

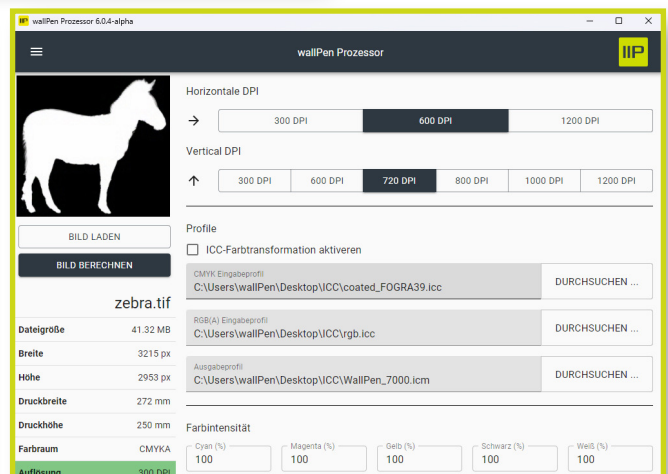
- 1.: The already familiar CMYK view
- 2.: An orientation view that shows the non-printed areas in black.
- 3.: A view that only shows the areas printed in white.



2.



3.



wallPen

GET VERTICAL

Werkstrasse 15
57537 Wissen
GERMANY

Phone: [+49 \(0\) 2742 96680 0](tel:+49(0)2742966800)
E-Mail: info@wallpen.com
Web: www.wallpen.com